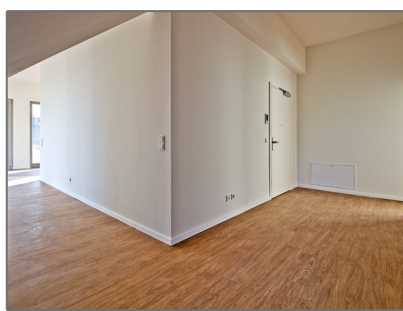


PENTHOUSE - KOMFORT UND MODERNITÄT IN AKTION

1,367.02 Sqft - Friedrichshagen, Berlin



Basic Details

Property Type: **Condominium**

Listing Type: **For Rent**

Listing ID: **9611**

Unit Number: **W-02C8AR**

MLS ID: **E&V1728**

Price Type: **Per Month**

Price: **€2,111 Per Month**

View: **Garden**

Bedrooms: **2**

Bathrooms: **1**

Internal: **1,367.02 Sqft**

Features

- ✓ Garden
- ✓ Kitchen
- ✓ Parking
- ✓ BBQ Area
- ✓ Balcony
- ✓ Security
- ✓ Furnished
- ✓ Air Conditioning

Appliances

Address Map

- | | |
|----------------|-------------------|
| ✓ Refrigerator | ✓ Microwave |
| ✓ Hob | ✓ Washing Machine |
| ✓ TV | ✓ Oven |

Country:	Germany
State:	Berlin
County:	Friedrichshagen
Neighborhood:	6735 / Berlin
Longitude:	E13° 38' 26.2"
Latitude:	N52° 27' 40.9"

Neighborhood

Shopping Center: **15 Minutes**

Town Center: **11 Minutes**

Hospital: **12 Minutes**

Police Station: **9 Minutes**

Airport: **35 Minutes**

Coffee Shop: **3 Minutes**

Park: **4 Minutes**

School: **9 Minutes**

University: **17 Minutes**

Agent Info



Terra International Realty (Berlin)

<https://terrainternationalrealty.com>

berlin@terrainternationalrealty.com



H. Schweitzer

✉ H.L-S@terrainternationalrealty.com

+852 5808 0333 - 1102/ F - The Lee Garden 1 33 Hysan Ave, Causeway Bay - Hong Kong

©Terra International Realty