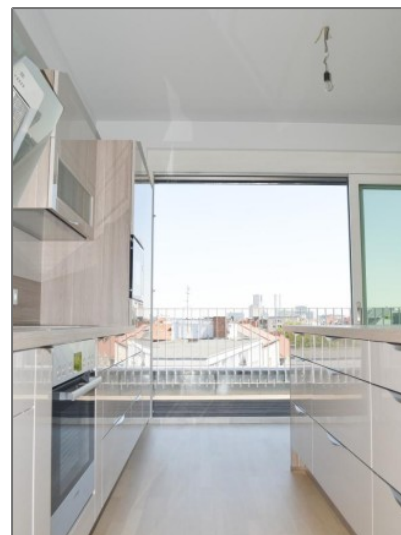
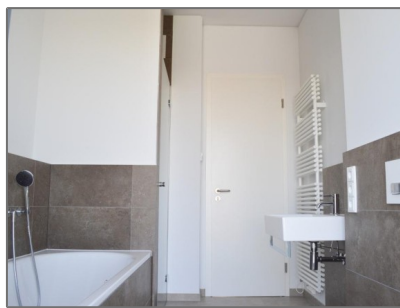


# EXKLUSIVES NEUBAU- PENTHOUSE ÜBER DEN DÄCHERN BERLINS

1,076.39 Sqft - Charlottenburg, Berlin



## Basic Details

Property Type: **Condominium**

Listing Type: **For Rent**

Listing ID: **9522**

Unit Number: **W-02CK70**

MLS ID: **E&V1718**

Price Type: **Per Month**

Price: **€2,225 Per Month**

View: **Garden**

Bedrooms: **1**

Bathrooms: **1**

## Features

- ✓ Elevator
- ✓ Balcony
- ✓ Security
- ✓ Furnished
- ✓ Wi Fi
- ✓ Garden
- ✓ Kitchen
- ✓ Parking
- ✓ Playground
- ✓ Air Conditioning

Internal: **1,076.39 Sqft**

Year Built: **2015**

## Appliances

Refrigerator       Microwave  
 Hob                       Oven

## Address [Map](#)

Country: **Germany**

State: **Berlin**

County: **Charlottenburg**

Neighborhood: [6735 / Berlin](#)

Longitude: **E13° 18' 14.8"**

Latitude: **N52° 30' 59.8"**

## Neighborhood

Shopping Center: **9 Minutes**

Town Center: **10 Minutes**

Hospital: **11 Minutes**

Police Station: **12 Minutes**

Bus Station: **32 Minutes**

Airport: **15 Minutes**

Coffee Shop: **3 Minutes**

Cinema: **16 Minutes**

Park: **7 Minutes**

School: **11 Minutes**

University: **15 Minutes**

## Agent Info



Terra International Realty (Berlin)  
<https://terrainternationalrealty.com>  
✉ [berlin@terrainternationalrealty.com](mailto:berlin@terrainternationalrealty.com)



H. Schweitzer

✉ [H.L-S@terrainternationalrealty.com](mailto:H.L-S@terrainternationalrealty.com)

*+852 5808 0333 - 1102/ F - The Lee Garden 1 33 Hysan Ave, Causeway Bay - Hong Kong*

---

**©Terra International Realty**